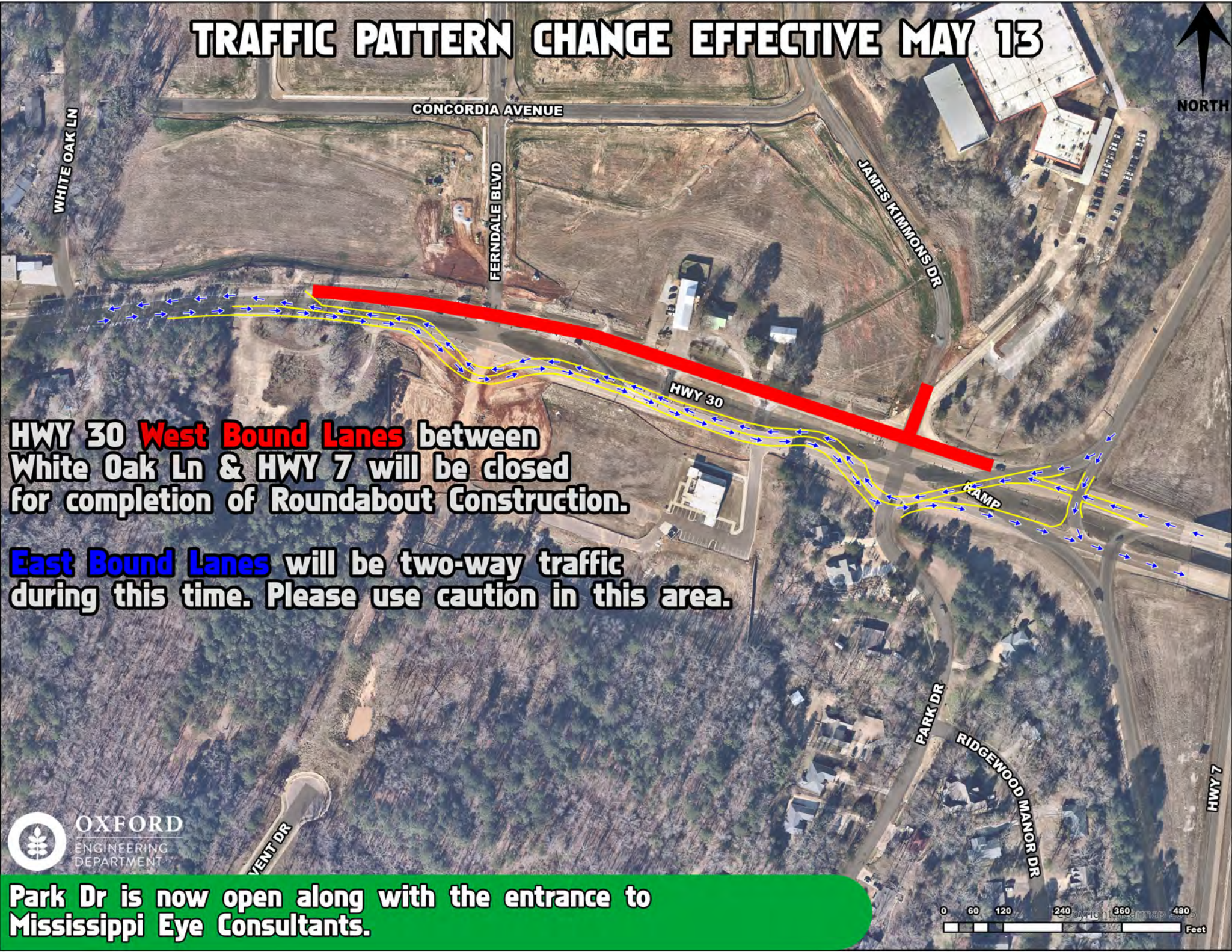


# TRAFFIC PATTERN CHANGE EFFECTIVE MAY 13



**HWY 30 West Bound Lanes** between White Oak Ln & HWY 7 will be closed for completion of Roundabout Construction.

**East Bound Lanes** will be two-way traffic during this time. Please use caution in this area.

**Park Dr is now open along with the entrance to Mississippi Eye Consultants.**

