

State of Mississippi
 Department of Archives and History
 P.O. Box 571
 Jackson, MS 39205

HISTORIC RESOURCES INVENTORY

1.a. Property Name, Historic Oxford Park Commission Offices		14. MDAH Inventory Code, 126
1.b. Property Name, Common		15. County Lafayette
2. Property Address 310 South 15th Street		16. City Oxford
3. Legal Description 86R:192		20. USGS Quad Map
19. Ownership public	22. Condition fair	21. UTM Reference
4. Former/Historic Uses offices	5. Present Use offices	24. Principal Materials stone veneer
6 & 7. Significant persons, events, themes, including dates of association		
8. Date of Construction 1938	9. Historic Changes	23. Post Historic Changes
10. Architect	11. Builder/Contractor	25. Architectural Style Craftsman
13. Outbuildings or Secondary Features (use sep. form if important) Oxford Water Tower, ca. 1975. (NC) Storage Shed, ca. 1980. (NC) One-story, four-bay, metal-frame, gable roof, sheet metal roofing, sheet metal siding.		

12. Brief Description: One-story with exposed basement, eight-bay, stone-veneered office and community center with Craftsman influence, built 1938. Complex gable roof covered with asphalt shingles, with exposed rafter tails and novelty siding and ocular vents in gable ends. Windows are 6/6 double-hung sashes with heavy timber lintels. Entrances covered by gable-roofed hoods supported by shaped knee brace brackets. Two entrances have a six-light door and a solid replacement door.

30. Historical Information: Built by the Youth Conservation Corps in 1938, according to its corner stone.

31. Historical Contexts:

33. Sources of Information:

32. Additional Remarks or Information:

35. Owner's Name and Address

36. Photographer/Source
John Hopkins

37. Photo Roll/Frame

38. Photo Date
January, 2000

39. Form by Hopkins & Associates, Memphis, TN

40. Survey Project Oxford

Date of Form January, 2000

Attach Photograph



MDAH INFORMATION

26. Category

27. Functional Type

28. Registration Status/Dates
NHL
Listed NR
In NR District
Federal DOE
State Landmark
Local Landmark
In Local District
HABS/HAER

29. District Name

Rating C/N C
Inventory #

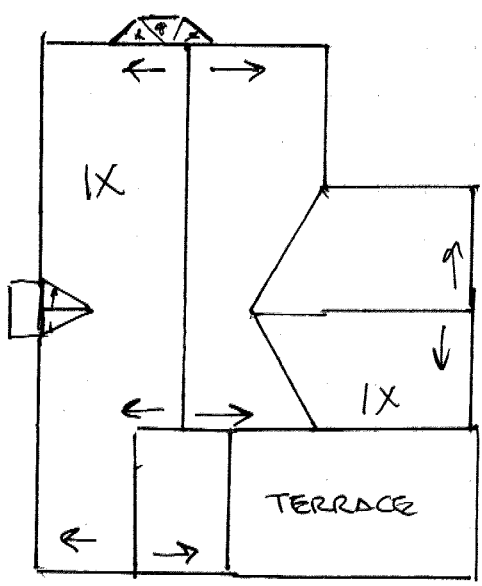
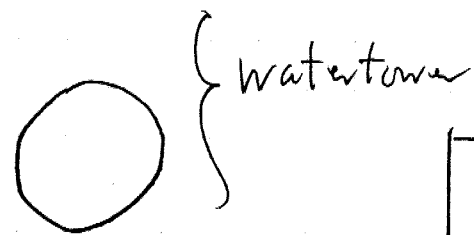
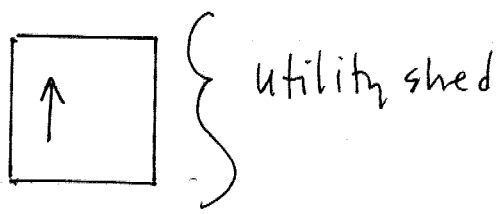
42. Other HPD Information

43. Evaluation

a. Already Listed NR
Individually Eligible
Eligible if Restored
Contribute to District
Apparently Not Eligible
Insufficient Information
Not Extant

b. Area(s) of Significance

c. Evaluated by/date



310 S. 15th

