



## The City of Oxford Bike and Pedestrian Map

This map is published by the City of Oxford and is available on these websites: [www.oxfordms.net](http://www.oxfordms.net). For more route information including local mountain bike trails please visit [www.oxfordcycling.com](http://www.oxfordcycling.com).

### Safety:

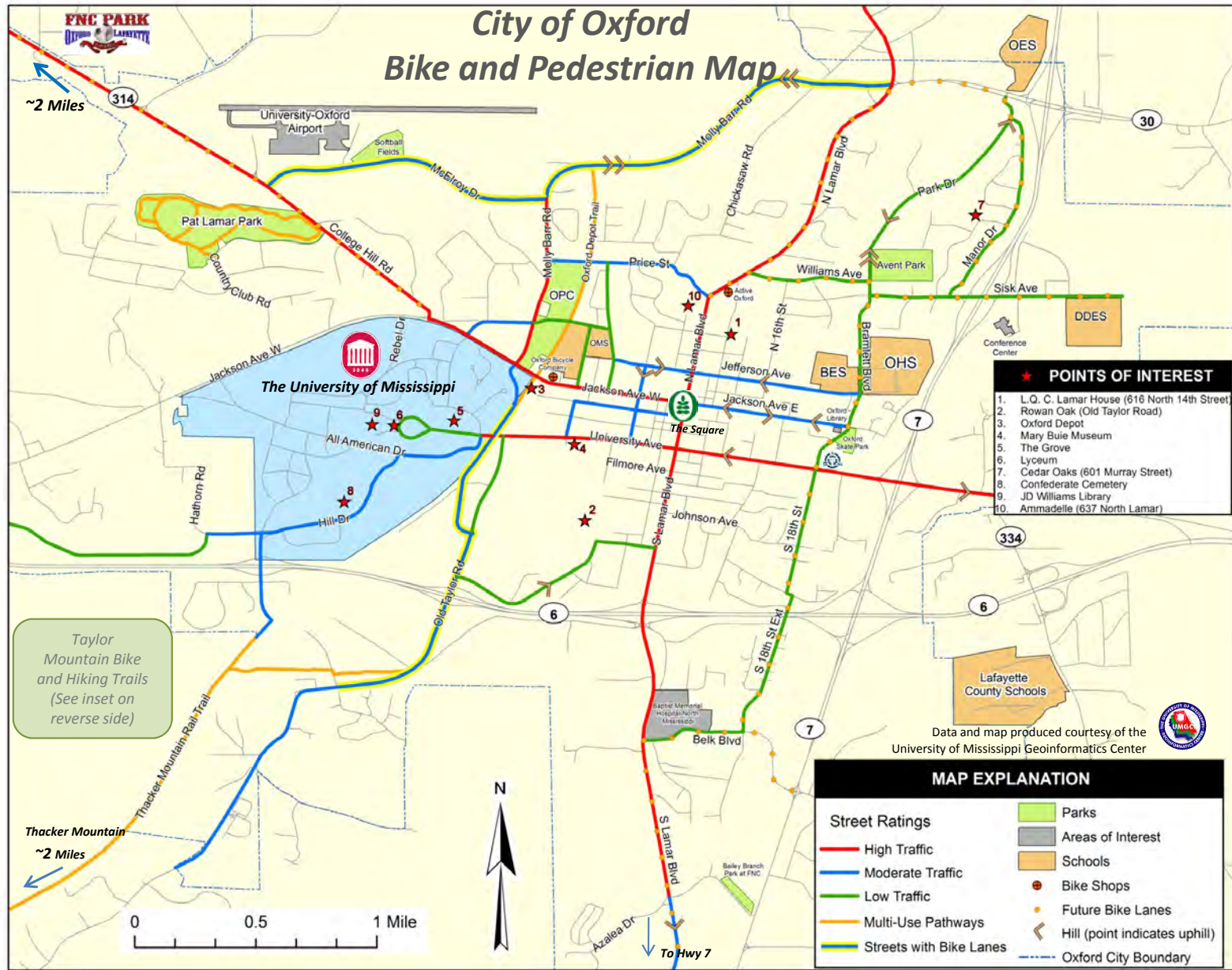
**Safety Responsibility:** Bicycle route locations depicted are advisory and illustrative only. The City of Oxford has not undertaken any independent safety review of the bicycle routes (and facilities). Users of this map expressly agree that their use is at their sole risk. Map Users also assume the entire risk as to the quality and accuracy of the map.

Front lights and rear reflectors are required after dusk. Helmet usage is strongly encouraged.

Special thanks to the Mayor, Board of Aldermen, the Pathways Commission, Oxford Cycling and the University of Mississippi Geoinformatics Center for their contribution of time and effort on the development of this map.

The City of Oxford and the authors of this map disclaim any responsibility for errors, omissions or inaccuracies in this map. In no event shall the City of Oxford be liable for any damages or loss of any kind related to the data and information contained on this map.

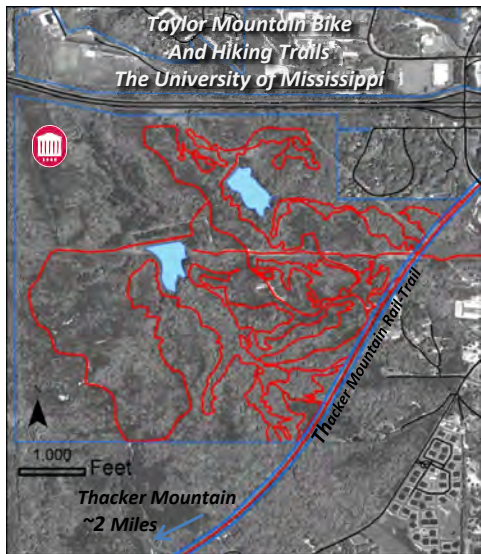
**DISCLAIMER:** This product is for information purposes and has not been prepared for, or is suitable for legal, engineering or surveying purposes. Users of this information should review or consult the primary data and information sources to ascertain the usability of the information.







Trails illustrated below may extend beyond those which are mapped. Please respect personal property boundaries.



Trails derived from GPS data.

